



Lotusphere

Comes to You

IBM

Lotus



IBM Lotus® Sametime®

Technical Architecture and Roadmap

Your Name

You Title



Today's Agenda

§ Where we are

- 4 Mobile IM Clients
- 4 Lotus Sametime Gateway

§ Where we're going

- 4 Lotus Sametime 7.5 Update
- 4 Lotus Notes® / Domino® Version 8 Support
- 4 FIPS-140 Compliance
- 4 Enhancements to Web Conferencing
- 4 Unified Communications
- 4 Organizational Collaboration

§ Early Glimpse: Unified Meeting Technology

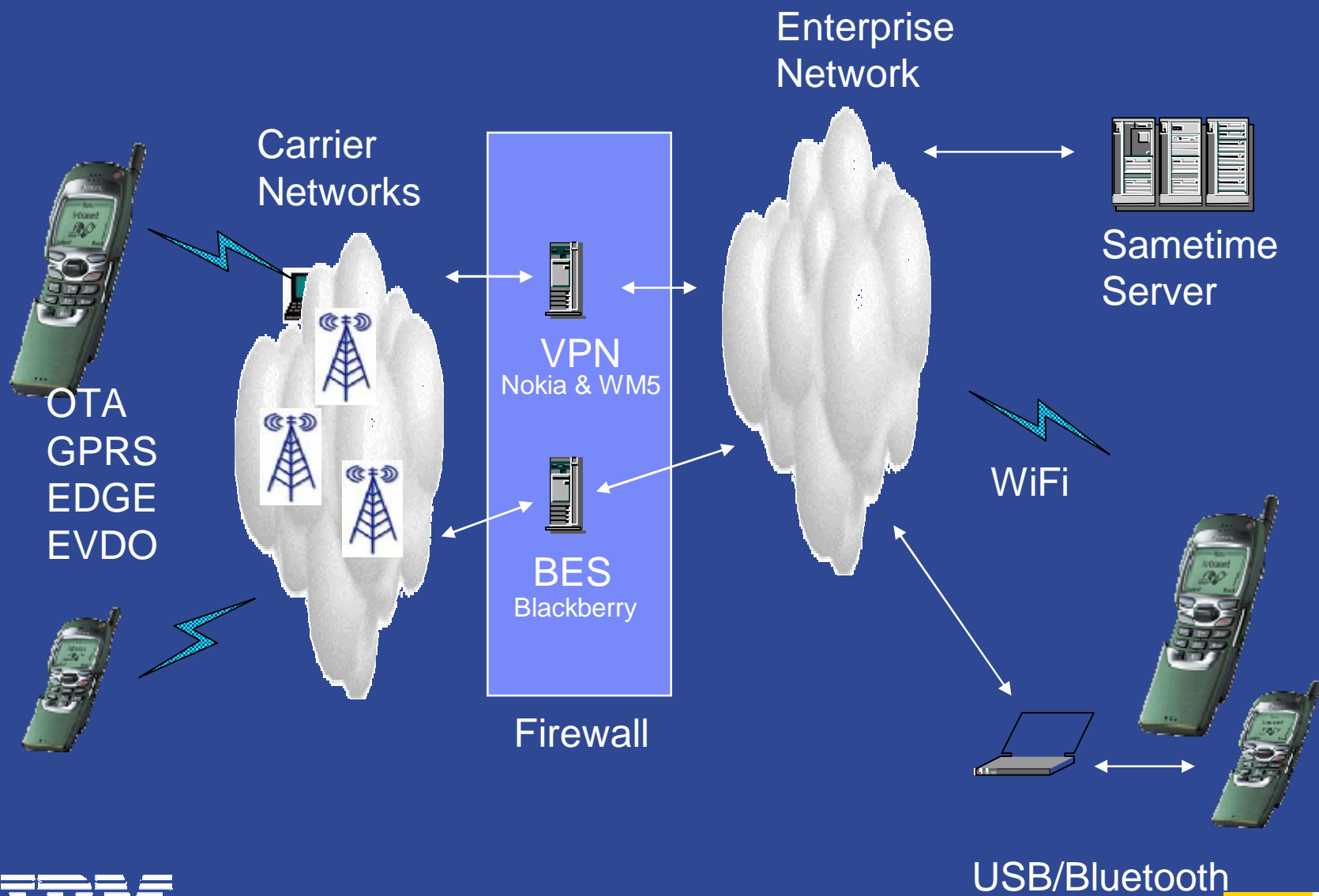


Lotus Sametime Mobile client

- § Automatic saved Chat History and Retrieval
- § Alert me when user becomes active
- § Sound/Vibrate alerts for incoming chats and responses
- § Emoticon support
- § Support across variety of platforms and devices
 - 4 Windows Mobile 2003 (e.g., HP iPaq H6315)
 - 4 Windows Mobile v5 (e.g., Sprint / HTC 6700, HP iPAQ hx2790, Dell Axiom x51v, Motorola Q)
 - 4 RIM Blackberry (4.0+ RIM platform)
 - 4 Symbian (e.g., Nokia E61/E70, Sony Ericsson P990i)
- § External Buddy support for public IM services



Connection Topology

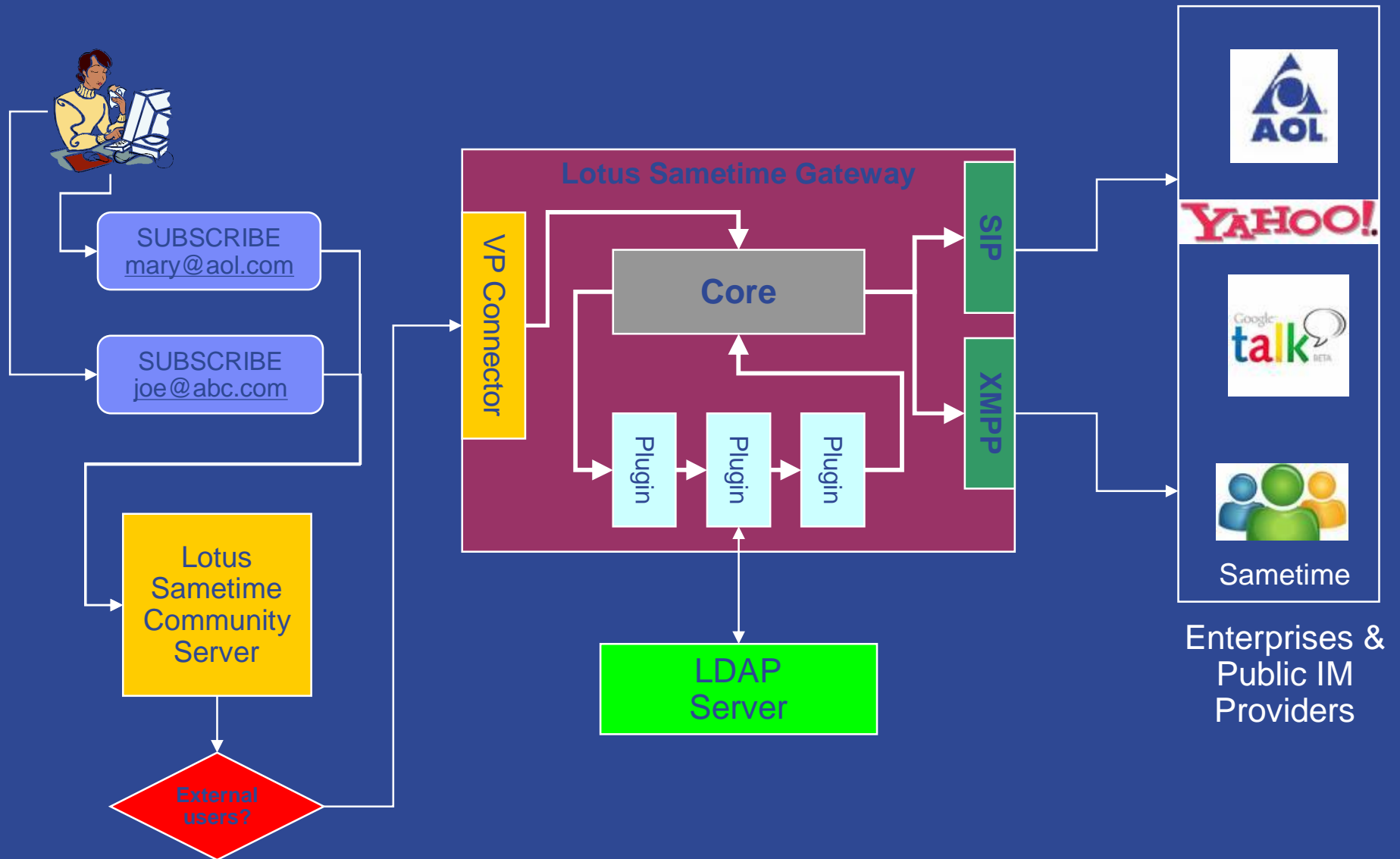


Lotus Sametime Gateway

- § A new Lotus Sametime system component ...
- § Written in Java™ and running in WebSphere® system environment ...
- § Provides *Federation* among external IM communities and your local Lotus Sametime deployment ...
 - 4 Public IM communities, and other instances of Lotus Sametime itself
- § *Extensible* via different types of plug-ins ...



How does it work?



Lotus Sametime integration into Microsoft Office, Outlook

§ Microsoft Outlook (Office XP and higher)

- 4 View Lotus Sametime presence from within Microsoft Outlook
 - § Directly utilizes the Lotus Sametime 7.5 client for presence, chat, voice, etc.
- 4 Schedule and launch a Lotus Sametime Web Conference from the Microsoft Outlook calendar

§ Microsoft Office (Office XP and higher)

- 4 View Lotus Sametime presence from SmartTags in Microsoft Office
 - § Directly utilizes the Lotus Sametime 7.5 client for presence, chat, voice, etc.
- 4 Launch a Lotus Sametime Web Conference directly from Microsoft Office

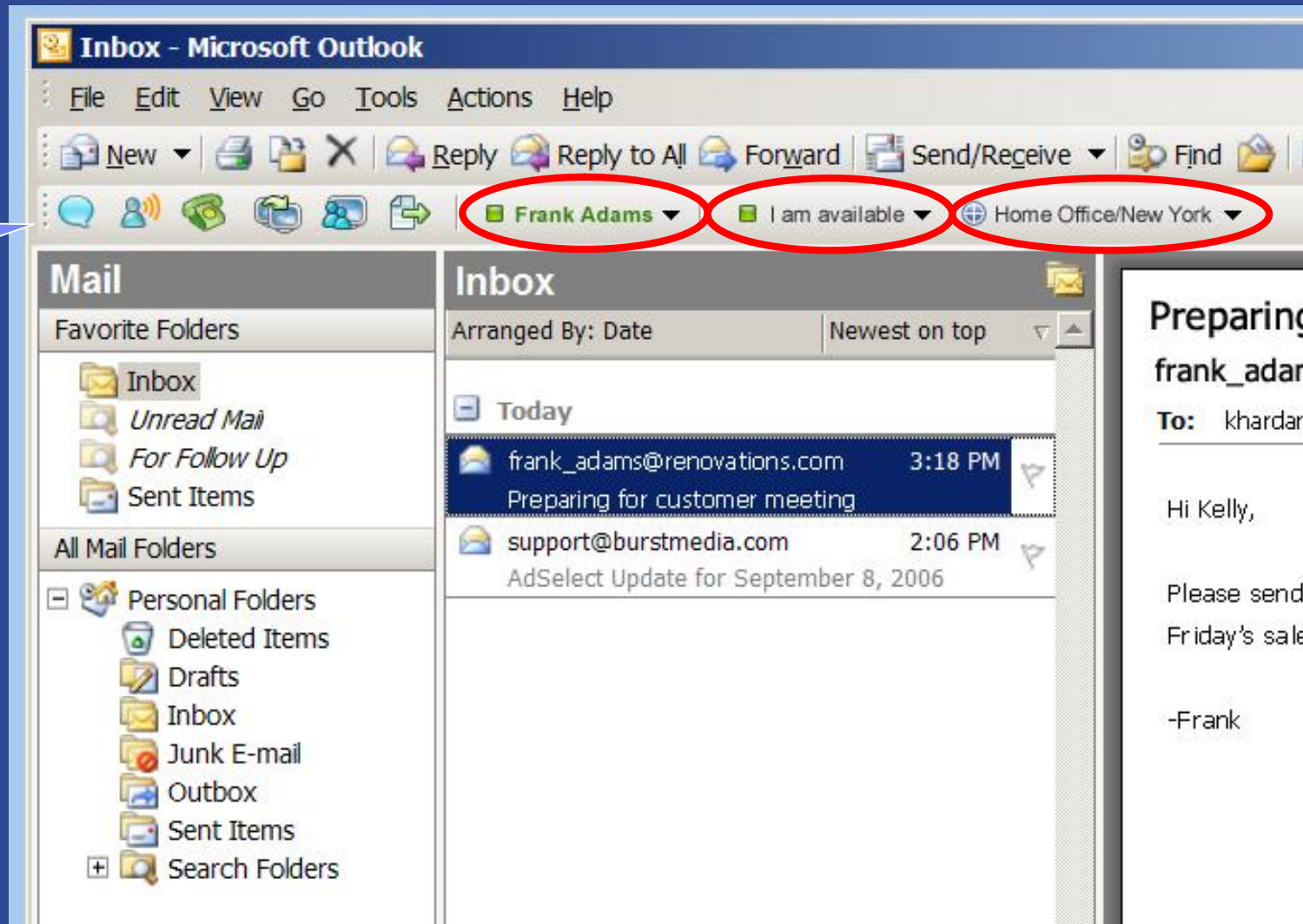
§ Microsoft Sharepoint

- 4 Continued support for presence enabling Sharepoint sites (or any web application), through Lotus Sametime toolkits. Deeper levels of integration are being explored

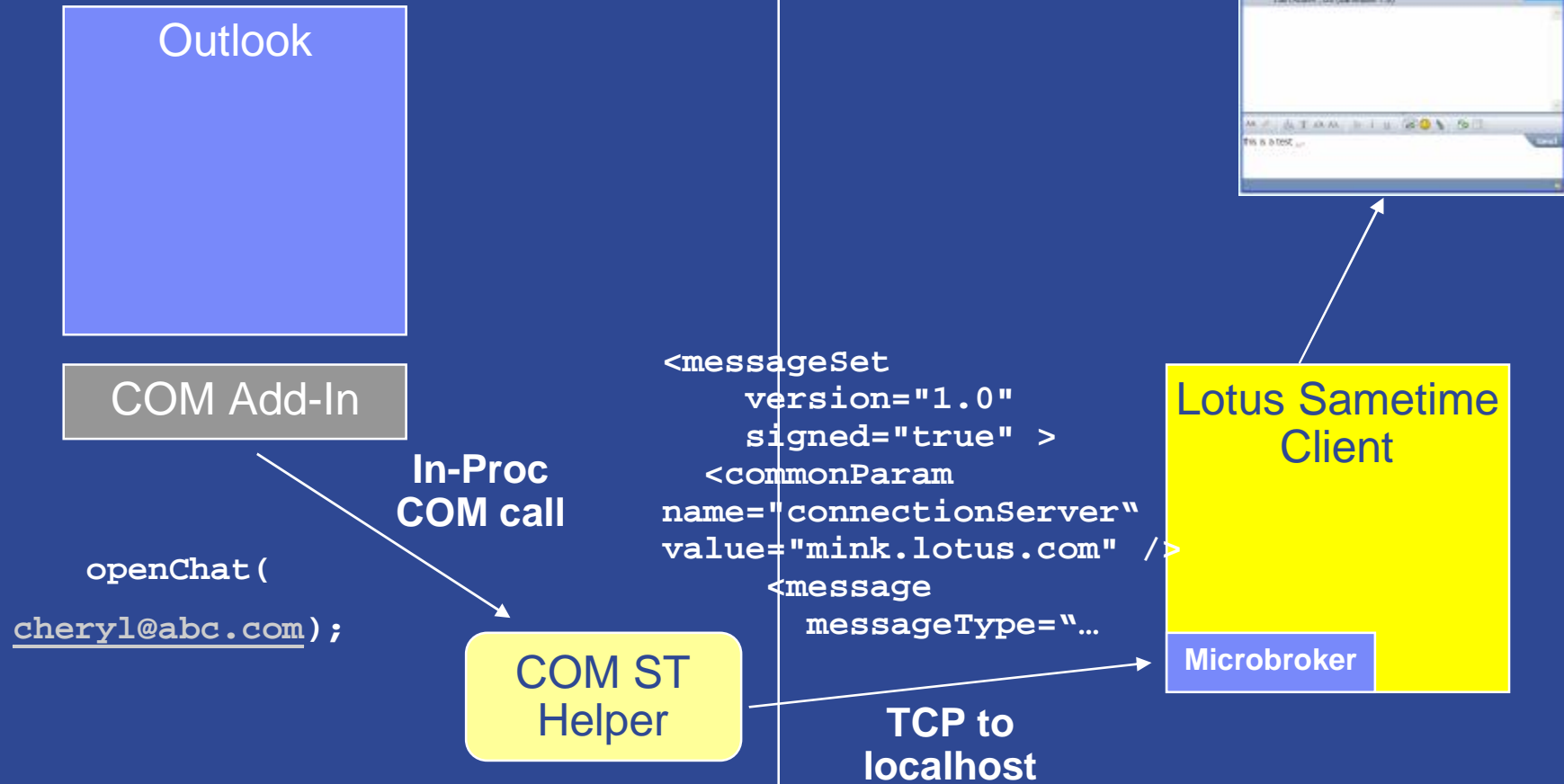


Lotus Sametime – Office Integration : Outlook

Command Buttons



Technical Approach



Lotus Sametime – Office Integration : Outlook

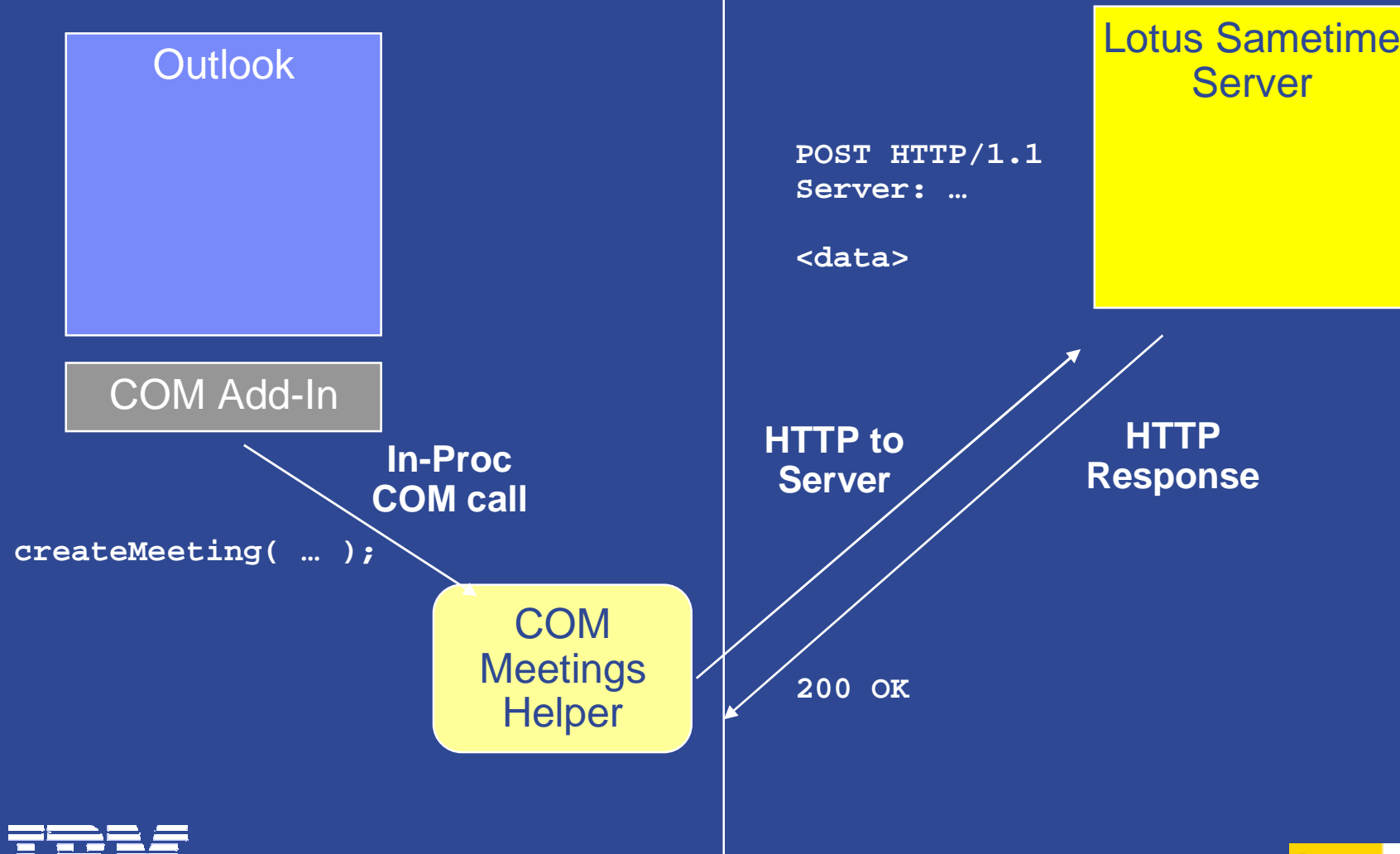
The screenshot shows a window titled "Untitled - ST OnlineMeeting" with a menu bar (File, Edit, View, Insert, Format, Tools, Actions, Help) and a toolbar with icons for Send, Recurrence, Cancel Invitation, and other meeting controls. Below the toolbar are tabs for "Appointment", "Sametime Online Meeting", and "Scheduling". The "Sametime Online Meeting" tab is active, displaying various configuration options:

- IBM Lotus Sametime Web Conference
- Start Meeting Now
- Password Protect
- Chair:
- Record this meeting
- Password:
- Open meeting to all users
- All participants can present content

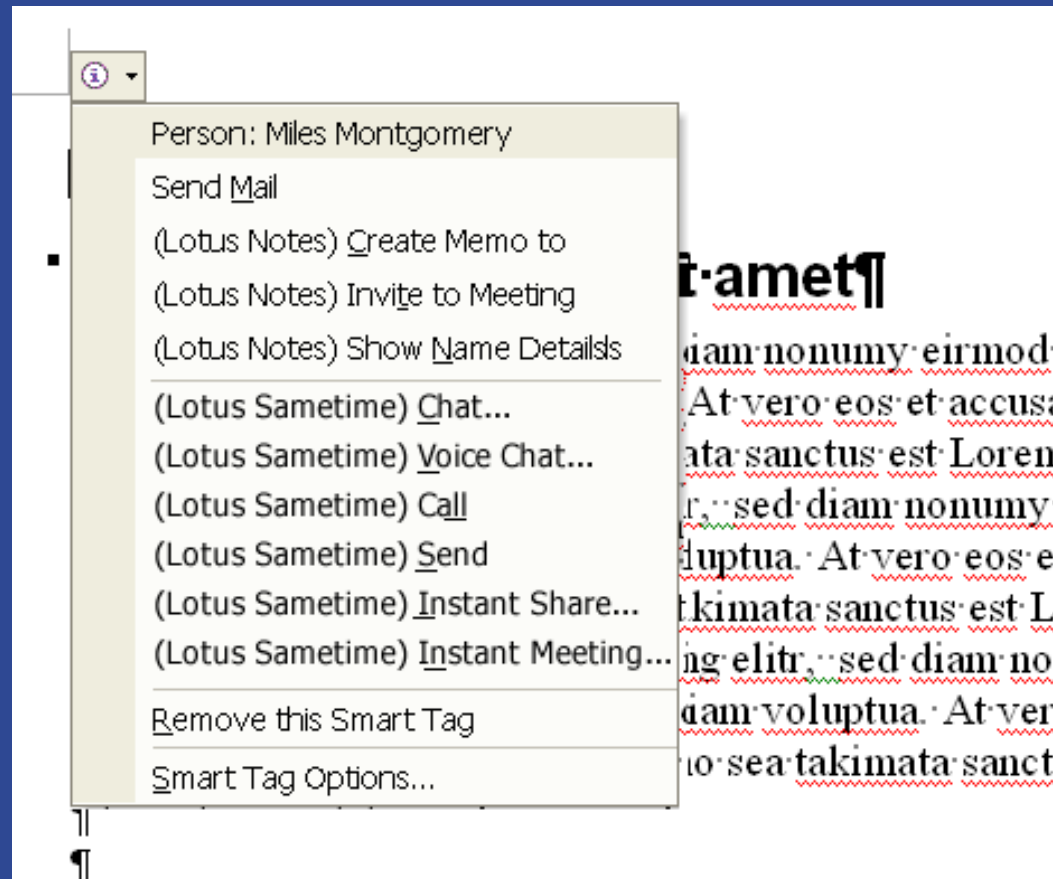
The "Audio, Video, and Phone Services" section includes:

- None
- Computer audio
- Computer audio and video
- Use phone number
- Client ID:
- None:
- Passcode:
- Service Locations:

Technical Approach



Lotus Sametime – Office Integration : SmartTag



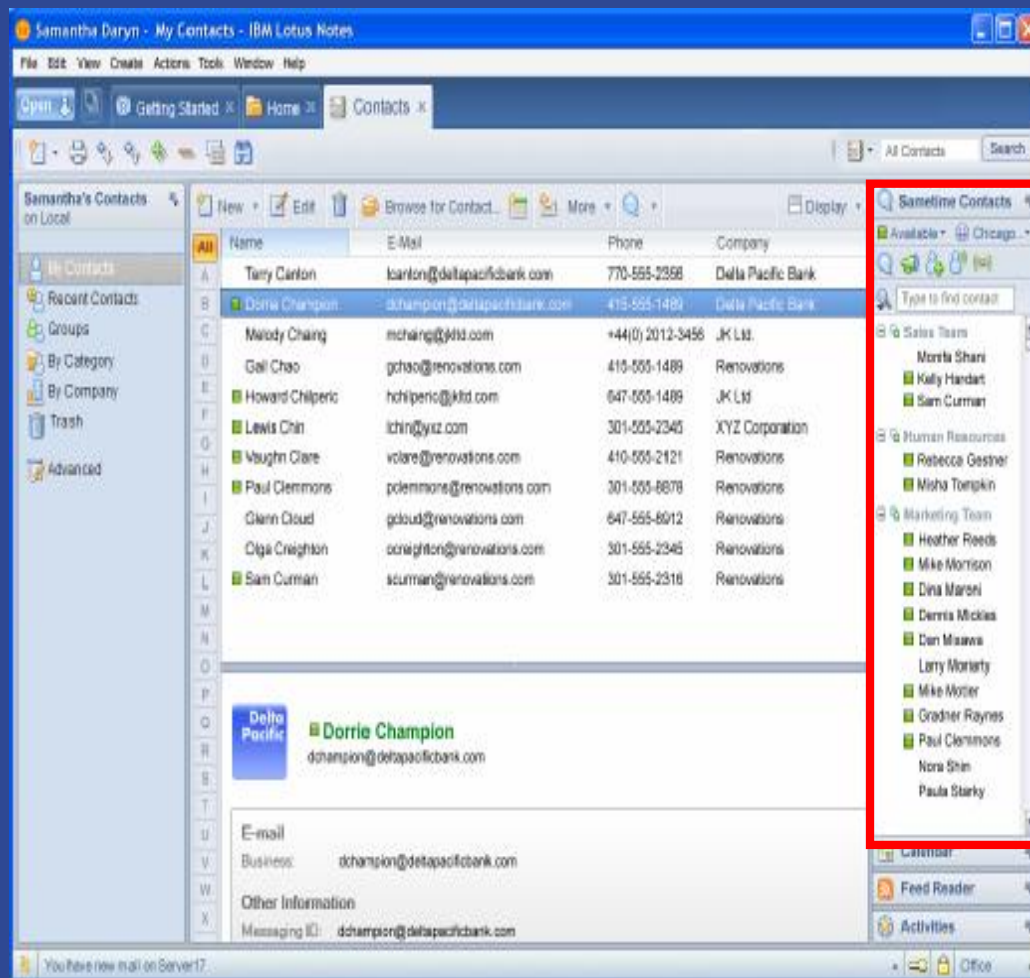
Lotus Sametime & Lotus Notes / Domino Version 8

§ Lotus Notes 8 will include a compatible version of Lotus Sametime

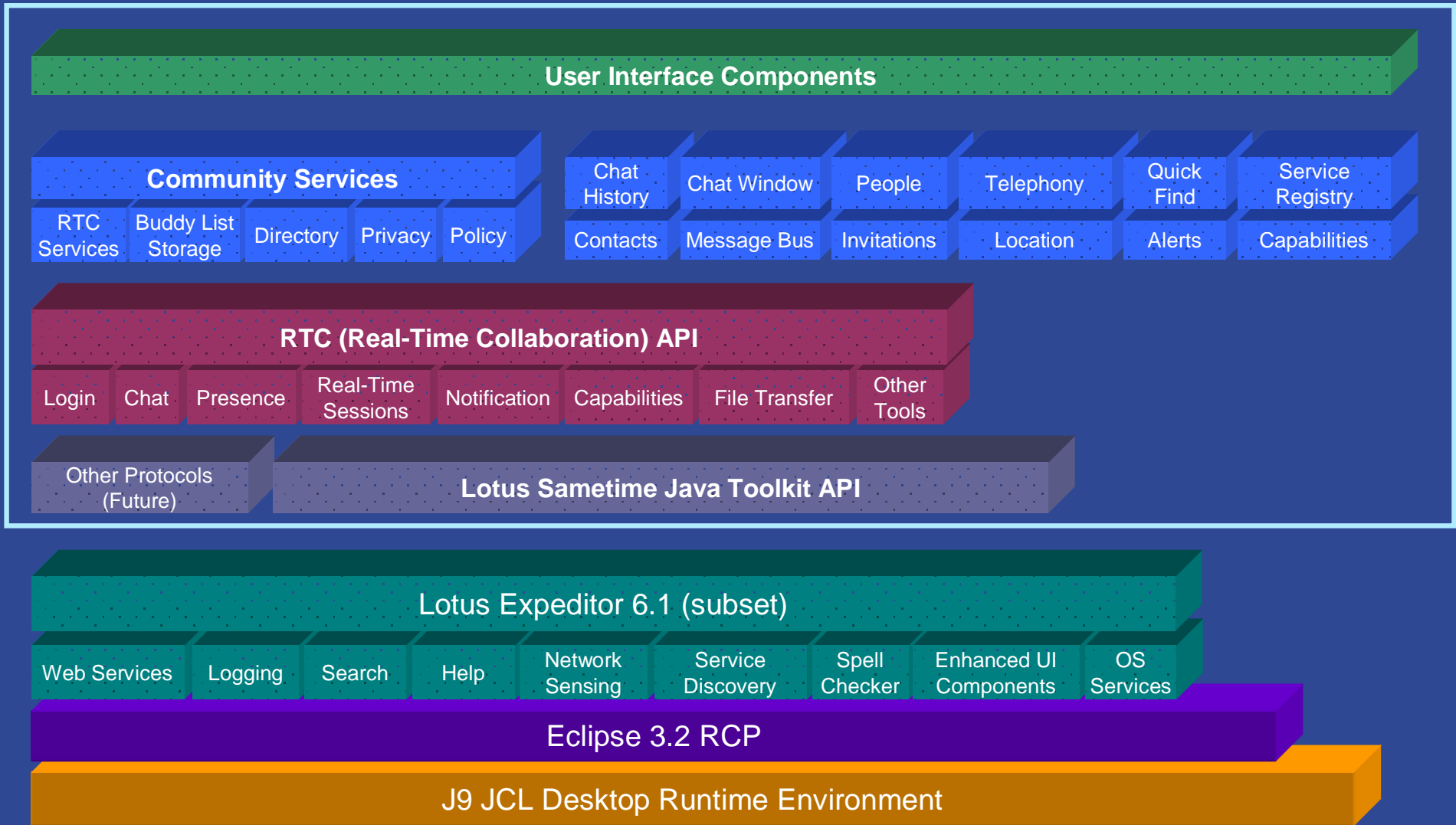
- 4 Limited use license
- 4 Ex: presence, IM, rich text, emoticons

§ Advanced Lotus Sametime capabilities can be enabled by Policy

- 4 Ex: file transfer, voice chat, multiple communities, screen capture



Lotus Sametime Connect Architecture



FIPS-140 Compliance

§ FIPS-140 is a U.S. Government standard for security

- 4 Specifies acceptable security profiles for applications
- 4 Covers both “data at rest” and “data in motion”

§ Lotus Sametime is not currently FIPS-140 compliant due to the use of non-approved security algorithms

- 4 Lotus Sametime uses MD5 for one-way hashing
- 4 Lotus Sametime uses RC2 for encryption (with a 128 bit key)

§ To become compliant, two things must change

- 4 Lotus Sametime must use approved algorithms, such as SHA and AES
- 4 Lotus Sametime must use certified implementations of these algorithms

§ As always, backward compatibility will be maintained

- 4 Configurable by the administrator



Planned Enhancements to Web Conferencing

- § Lotus Sametime web conferencing will be enhanced to address many of the remaining customer issues
- § Improved ability to manage the Java execution environment
 - 4 Use JVM loaded by Lotus Sametime Connect, or load one if necessary
- § Upgraded audio/video, equivalent to Lotus Sametime Connect
- § Recording of meetings in standard MPEG-4 format
 - 4 Can be downloaded and played in standard players, suitable for podcasting
- § Higher fidelity presentations
 - 4 Better conversion and dynamic scaling
- § Better calendar / email integration



Unified Communications & Collaboration (UC²)

§ Complementing Lotus Sametime, these features will provide out-of-the-box connectivity to many existing telephony systems

Presence. Aggregated presence indications that show both IM system & telephony system..

Telephony integration. Out-of-the-box support for virtually any corporate PBX or audio conferencing system.

Incoming call control. Get notification on your PC of incoming calls and be able to take action to answer or redirect the call

Advanced Audio Conferencing. Reads user's calendars and provides them with a single phone number and pass code to call to dial into any meeting; provides least call routing and PBX/Audio Bridge optimization.

Unified Messaging. Receive voice mail in your inbox and be able to listen to, delete, or forward voicemail from your e-mail client.

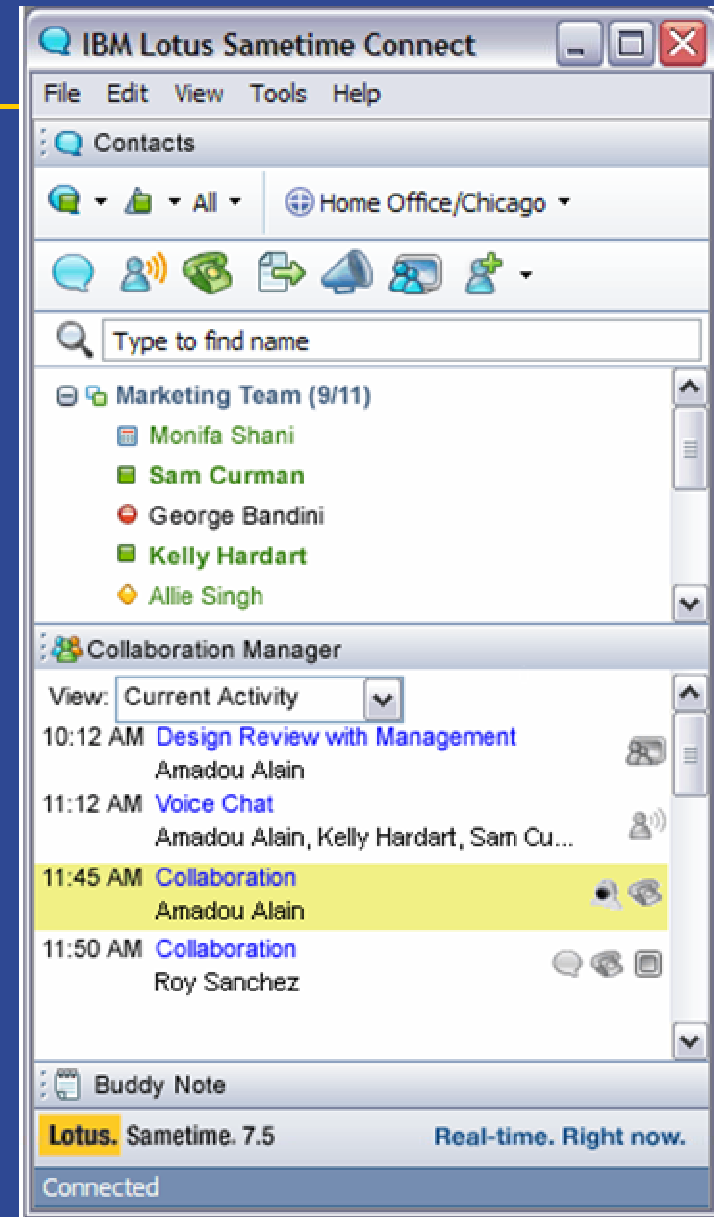
Soft phone. Software application that allows you to receive phone calls or make phone calls from your PC. A visual representation of the phone keypad.



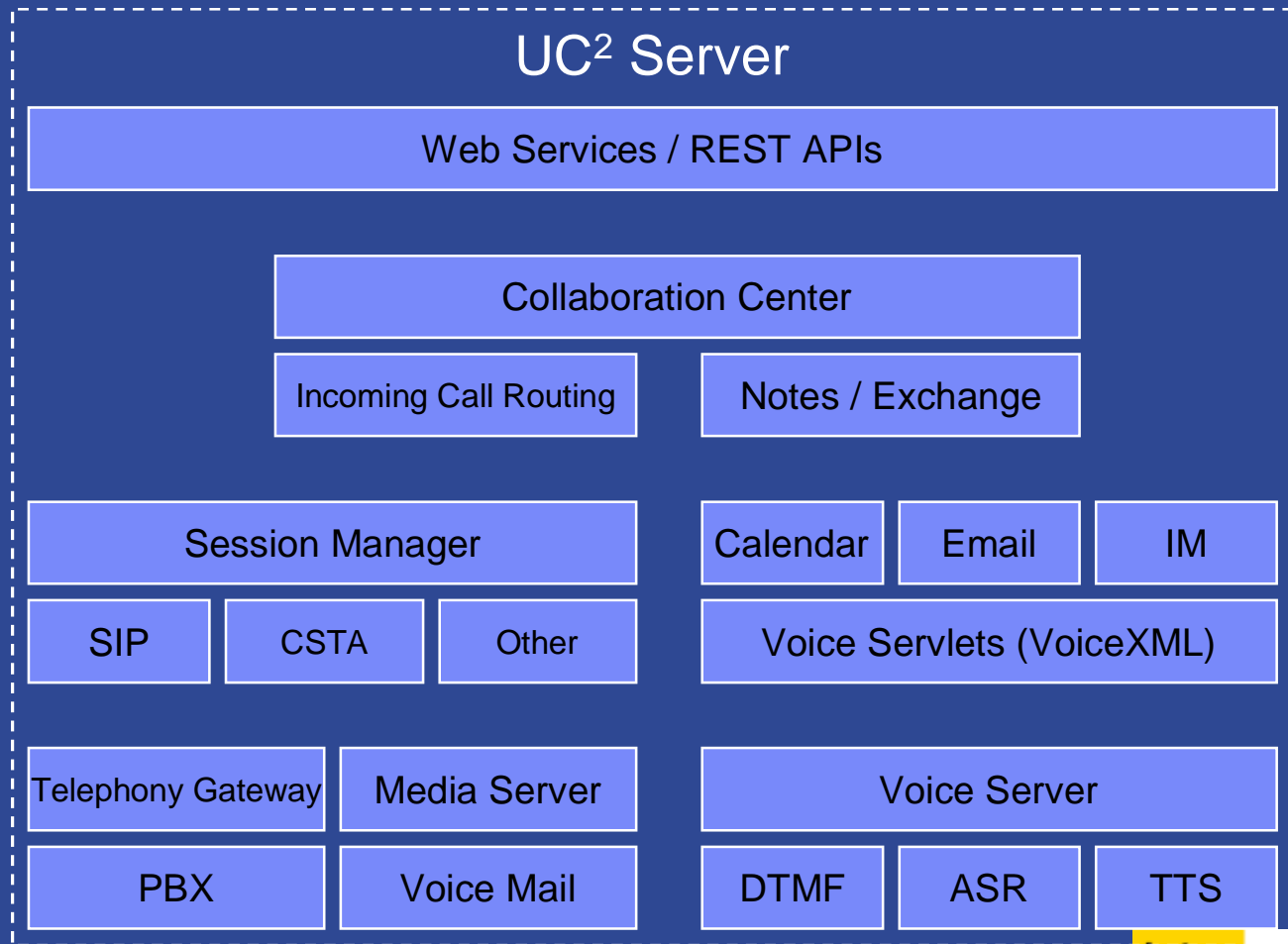
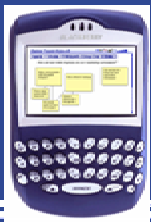
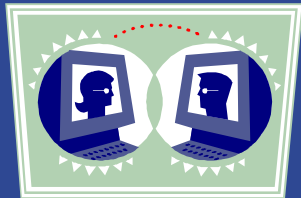
Common UC² Client

§ Provide Eclipse plug-ins for:

- 4 Voice mail
- 4 Recent communications into history
- 4 Soft phone (audio / video)
- 4 Hard phone control
- 4 Out-of-the-box support for many audio bridges
- 4 Enhanced presence
- 4 Location-e.911



UC² Server Architecture



Automated Assistant / Unified Meeting Access

Status Meeting
Tools Options
On: December 17, 2004
At: 2:00 PM - 3:00 PM
Time left: 42 minutes
Call: 8-862-1200
Call me now...

Who is currently attending the call

Who was invited but has not yet joined.

Click for Sametime functionality

The time left in the meeting.

Who is currently on mute (*6).

Who is currently speaking

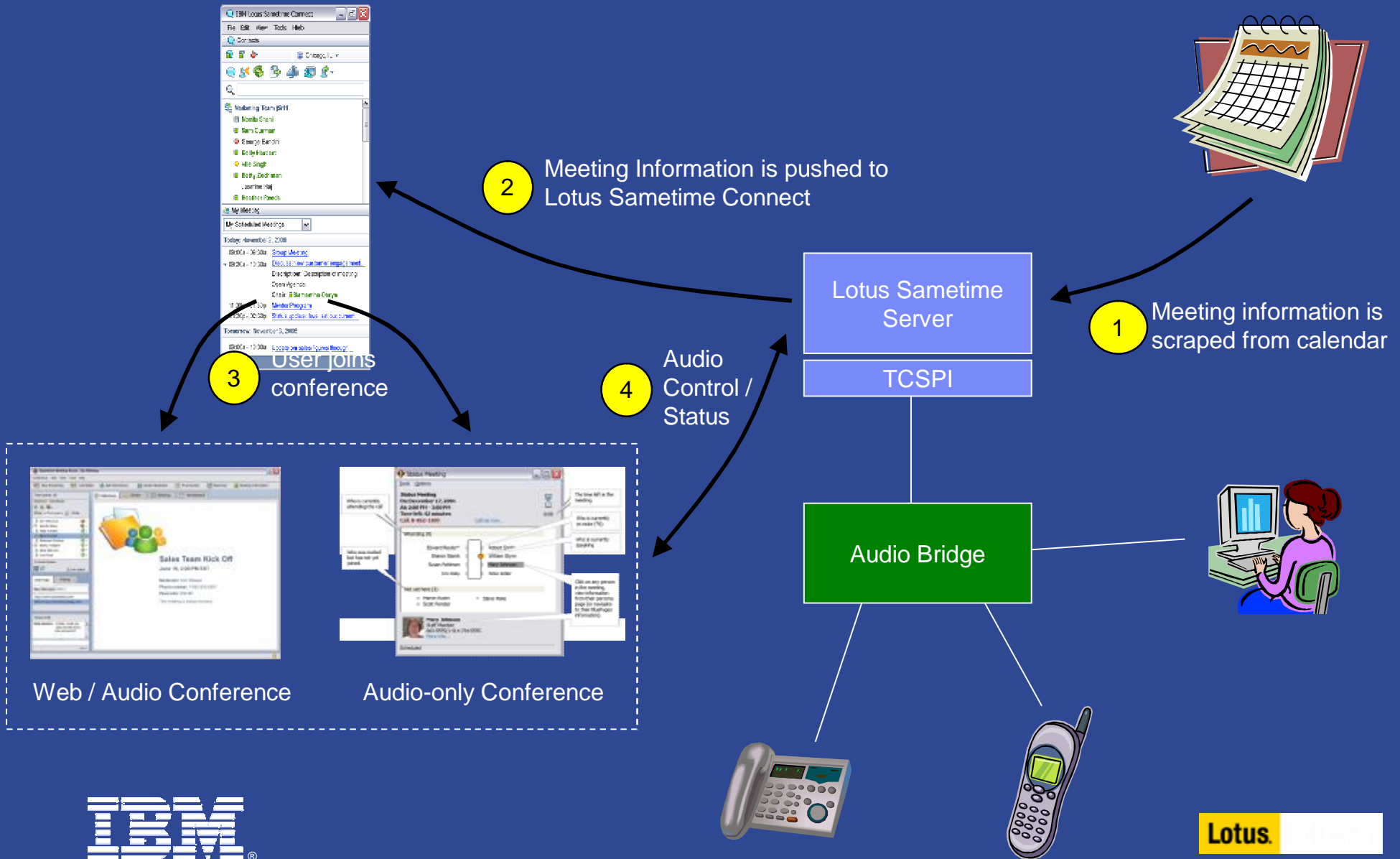
Click on any person in the meeting, view information from their persona page (or navigate to their BluePages information).

IBM Lotus Sametime Connect
File Edit View Tools Help
Contacts
Chicago, IL
Marketing Team (5/11)
Monifa Shani
Sam Curman
George Bandini
Kelly Hardart
Allie Singh
Betty Zechman
Jasmine Haj
Heather Reeds
My Meeting
My Scheduled Meetings
Today: November 2, 2006
09:00a - 09:30a Group Meeting
09:30a - 10:30a Discuss new customer engagement...
Description: Description of meeting
Open Agenda
Chair: Samantha Daryn
11:00a - 01:30p Mentor Program
01:30p - 02:30p Status update: level set out current...
Tomorrow: November 3, 2006
09:00a - 10:00a Update on sales figures through...
Connected

Prototype



How it works...



Organizational Collaboration

§ Building on the foundation of Lotus Sametime, these features push real-time collaboration beyond Presence, IM & Web Conferencing

Persistent chat. Keep a continuous chat discussion running on a specific topic. As new users join, they see the chat history.

Moderated chat. For large or public multiparty chats, allow a designated moderator to control which messages are posted publicly for everyone to see. Users can submit questions or responses privately to the moderator.

Broadcast tools

- **Alerts.** Connect users to Persistent and Moderated chats via realtime events.
- **SkillTap.** Broadcast questions, let experts volunteer to help within a specific community. Expertise rating. Ability to archive responses for future searches or FAQ creation
- **InstantPoll.** Gather answers and opinions to polling questions

Location services. Find people or resources based on location (IP, RFID, GPS, Cell, calendar or other applications) or receive real-time alerts on people or resource locations.



Persistent & Moderated Chat

§ Persistent Chat

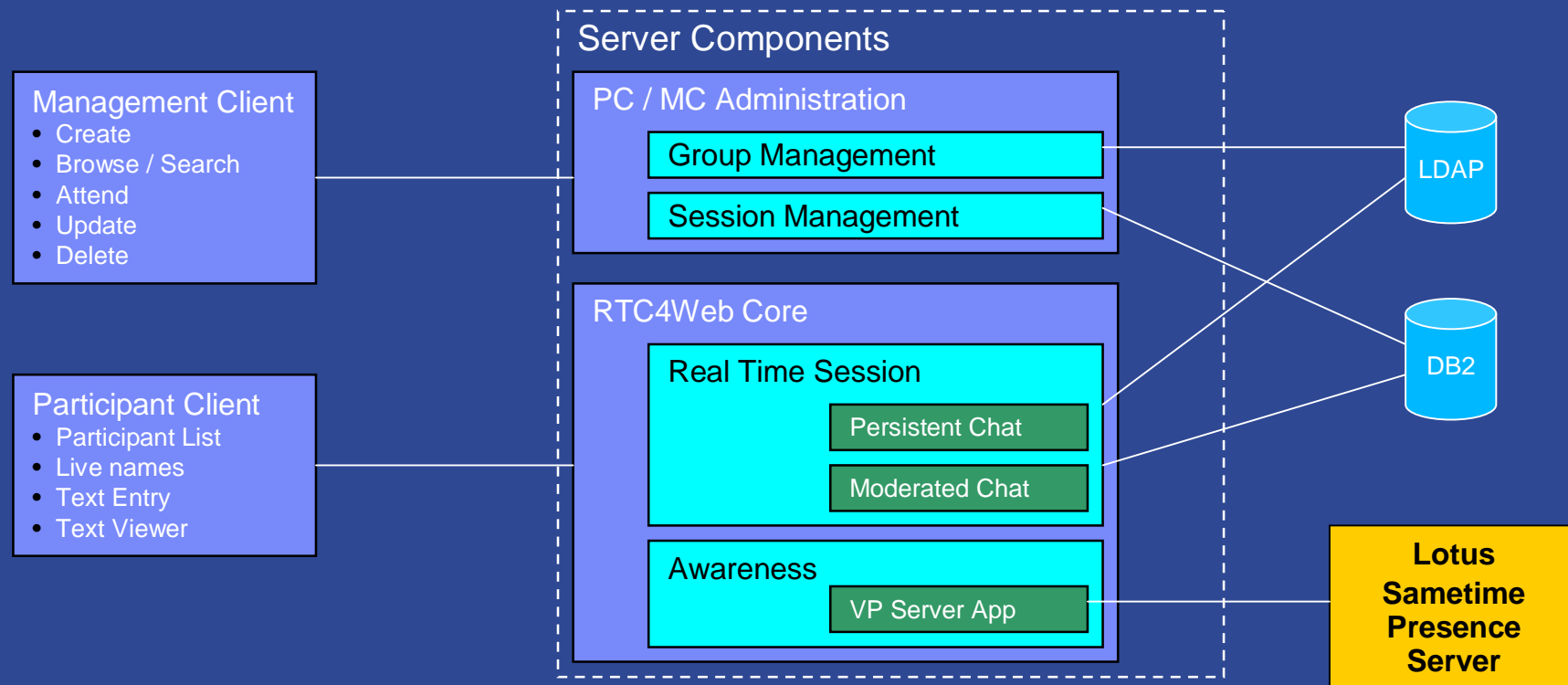
- 4 An N-Way chat with open-ended lifetime. As users join, chat, leave, the history of the chat is maintained in server-based storage
- 4 Accessible by both the Lotus Sametime Connect client and browsers
- 4 Other key features: See catalog of chats; classify/tag chats; see active chats; join chats; search chats

§ Moderated Chat

- 4 Special case of persistent chat; includes Speaker, Moderator and Participant roles
- 4 Tend to be 1-time events; but also can be re-started
 - § Example: A moderated chat that is active same time every week



Persistent / Moderated Chat Architecture



Broadcast Tools

§ Realtime interactions based on *topics* or *channels*.

- 4 Provides a means for users to direct requests for collaboration at groups of users likely to respond.

§ These topics can be *open*, or *private*; either can be *moderated*.

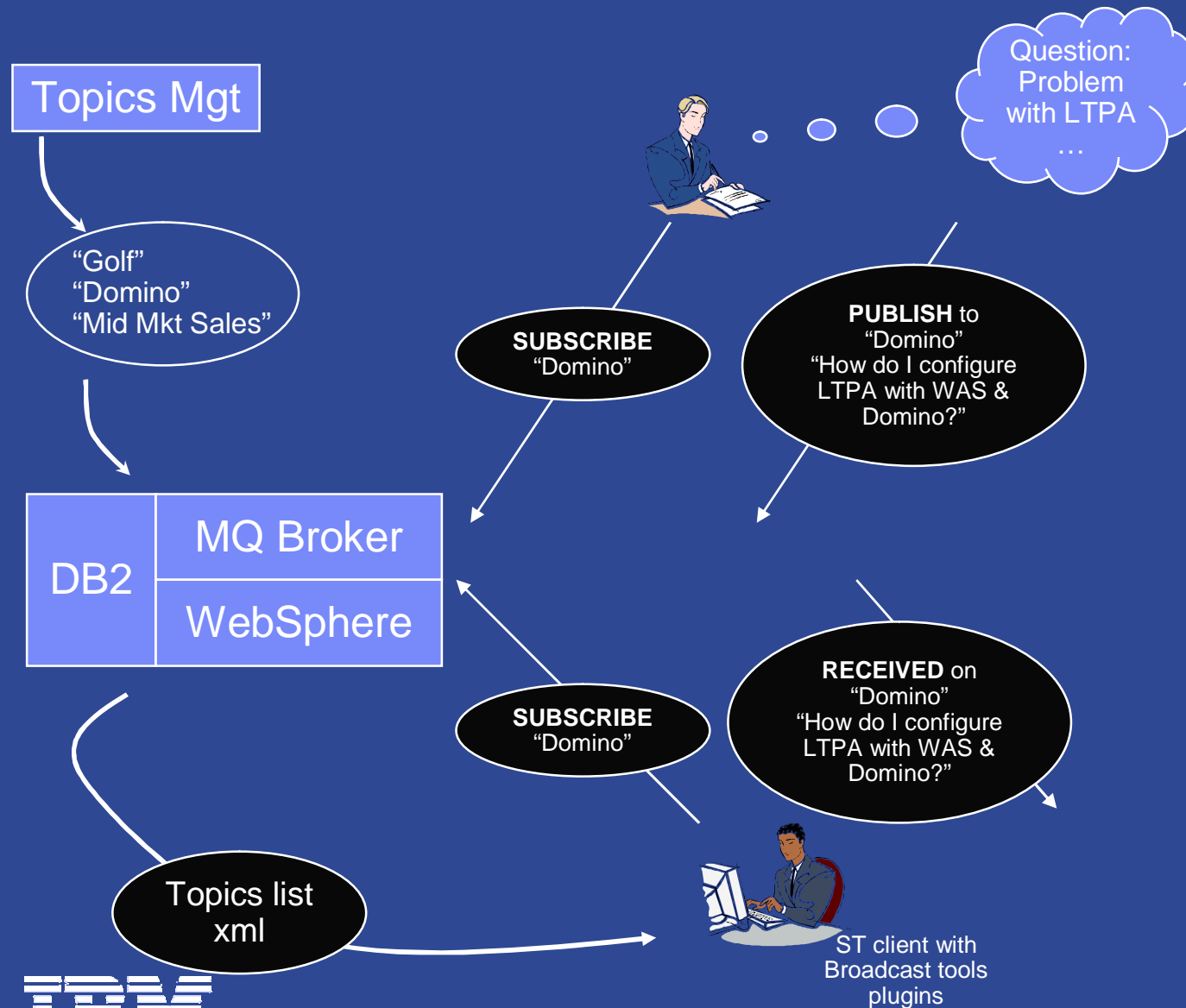
- 4 Open: anyone can subscribe.
- 4 Private: Only specified users can subscribe.
- 4 Moderated: Only specified users can publish.

§ The tools:

- 4 SkillTap: Send a question to all subscribers of topic. Process and rate responses; promote responses to FAQ storage.
- 4 InstantPoll: Send a poll question to a topic; Process responses.
- 4 FreeJam: Initiate an N-Way chat with topic subscribers.



How do the Broadcast Tools Work?



- At this point, clients communicate via new broker channels for this specific request.
- Can escalate to ST chats as desired.

Early Glimpse: Unified Meeting Technology

§ Simple

- 4 Effortless to join, easy to use, and fun to explore. Has the tools you need, when you need them, in a flexible, extensible, and personalized interface

§ Integrated

- 4 Audio and video are completely integrated in the experience, so you can take advantage of whatever communication tools you have available

§ Rich tools

- 4 Provides the tools you need to have the meetings you want to have, with reservation-less and ad-hoc meeting spaces that are available whenever they are needed

§ Break-through in effective meetings

- 4 Draw on IBM's expertise in real-time capabilities, collaborative tools, and community-based solutions to satisfy your requirements for all online meetings



Joining a Meeting

- § Reminders just before the meeting
- § Automatic joining – phone and online conference tools

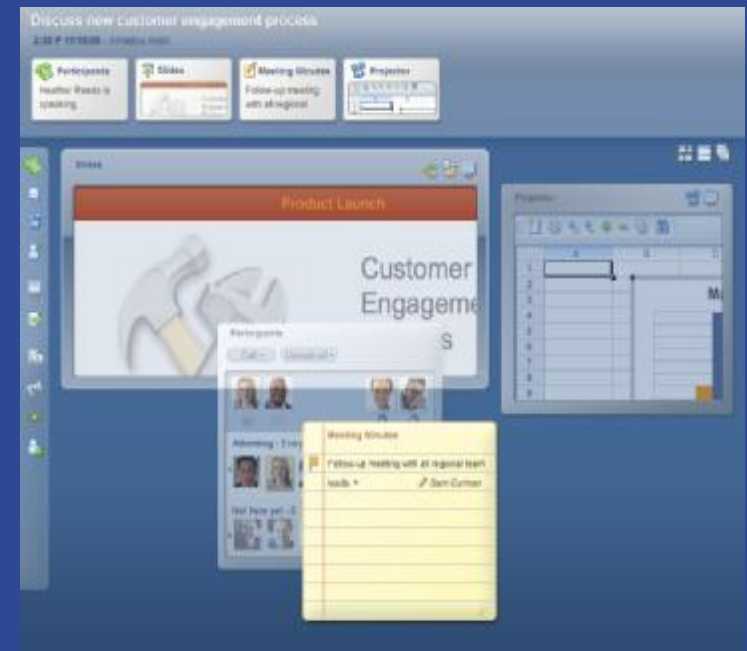


- § Meeting 'assistant' knows where to call and preferences
- § Awareness of who has joined, who will join, and who won't



Attending – The Meeting Space

- § Extensible array of tools to support effective meetings
 - 4 E.g., Participants, Slides, Sharing, Whiteboard, Minutes, File drawer, Agenda w/links to slides
- § Some tools are shared space, some are private
- § Manages focus and tool real estate
- § Easy distribution tool for anything in repository



Attending – Participant tool

§ Reinforce social nature of meetings

- 4 Pictures, business cards
- 4 Previous chats, IMs, meetings

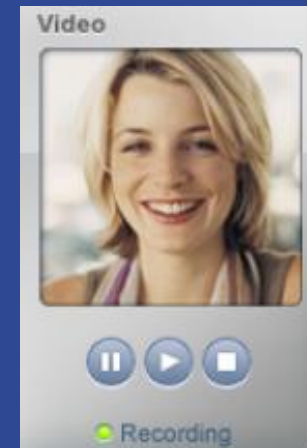
§ Know who is speaking and who wants to speak



§ Live names everywhere – access to person info

§ If camera, then use video for thumbnail and drag out to desktop

- 4 Drag new participants in to join them



Discuss new customer engagement process

2:30 P 11/15/06 - Amadou Alain

Participants
Heather R...
is speaking.

Projector

Meeting Minutes
Follow-up meeting with all regional

Screen Sharing

Live thumbnail views of open tools



Add tools from extensible palette

Shared space

Hi image quality at small sizes

Participants
Call ▾ Unmute all ▾

Attending - Everyone is muted

Not here yet - 3

Meeting Minutes 2:30 P
11/15/06

Follow-up meeting with all regional team leads. ▾ *Sam Curman*

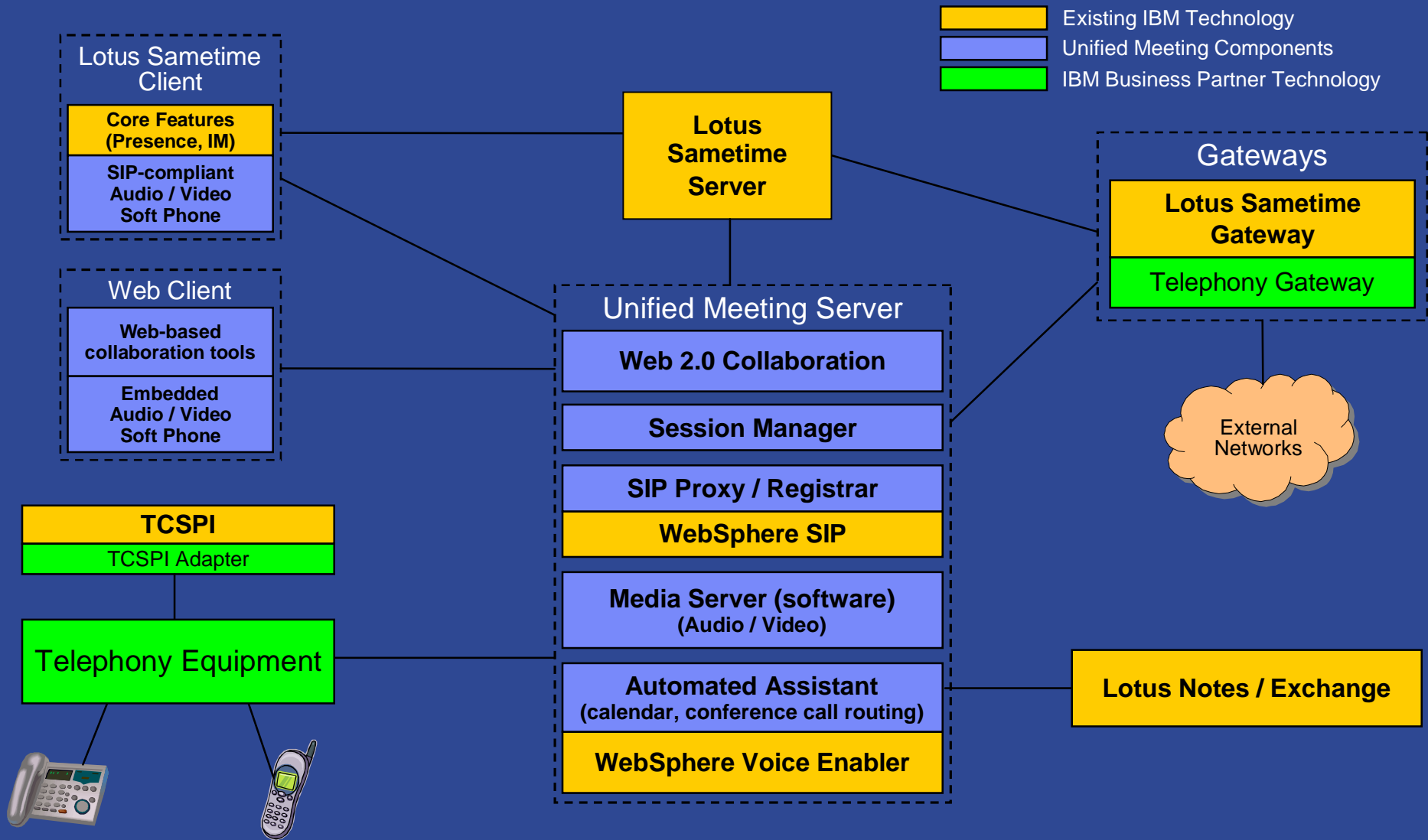
Set transparency of windows that float (user's focus is independent of layering)
+/- transparency

Screen Sharing

Video

Recording

Unified Meeting Architecture



Lotus Sametime – Planning for the Future

§ Unified Communication Client

- 4 Rich collaboration
- 4 Open extensible platform

§ Fully integrated audio/video

- 4 Both Lotus Sametime Connect and web client integration
- 4 Software only media server, with support for external hardware media servers

§ Web 2.0 / AJAX web collaboration

- 4 Javascript only, wherever possible
- 4 HTTP-based protocols (including RTC4Web)

§ SIP Proxy / Registrar

- 4 Manage SIP devices within the Lotus Sametime domain
- 4 Handle call routing both within and external to the Lotus Sametime domain

§ SIP / VP Presence Server

§ Voice application server

- 4 Automated assistant for call routing
- 4 Platform for other voice applications (e.g. IM-to-speech, speech-to-IM)





© IBM Corporation 2007. All Rights Reserved.

The workshops, sessions and materials have been prepared by IBM or the session speakers and reflect their own views. They are provided for informational purposes only, and are neither intended to, nor shall have the effect of being, legal or other guidance or advice to any participant. While efforts were made to verify the completeness and accuracy of the information contained in this presentation, it is provided AS IS without warranty of any kind, express or implied. IBM shall not be responsible for any damages arising out of the use of, or otherwise related to, this presentation or any other materials. Nothing contained in this presentation is intended to, nor shall have the effect of, creating any warranties or representations from IBM or its suppliers or licensors, or altering the terms and conditions of the applicable license agreement governing the use of IBM software.

References in this presentation to IBM products, programs, or services do not imply that they will be available in all countries in which IBM operates. Product release dates and/or capabilities referenced in this presentation may change at any time at IBM's sole discretion based on market opportunities or other factors, and are not intended to be a commitment to future product or feature availability in any way. Nothing contained in these materials is intended to, nor shall have the effect of, stating or implying that any activities undertaken by you will result in any specific sales, revenue growth or other results.

IBM, the IBM logo, Lotus, Lotus Notes, Notes, Domino, Sametime, WebSphere and Lotusphere are trademarks of International Business Machines Corporation in the United States, other countries, or both.

Java and all Java-based trademarks are trademarks of Sun Microsystems, Inc. in the United States, other countries, or both.

Microsoft, Windows, Office, Exchange, Outlook and Sharepoint are trademarks of Microsoft Corporation in the United States, other countries, or both.

Other company, product, or service names may be trademarks or service marks of others.

All references to Renovations refer to a fictitious company and are used for illustration purposes only.

Lotus

Lotusphere 2007